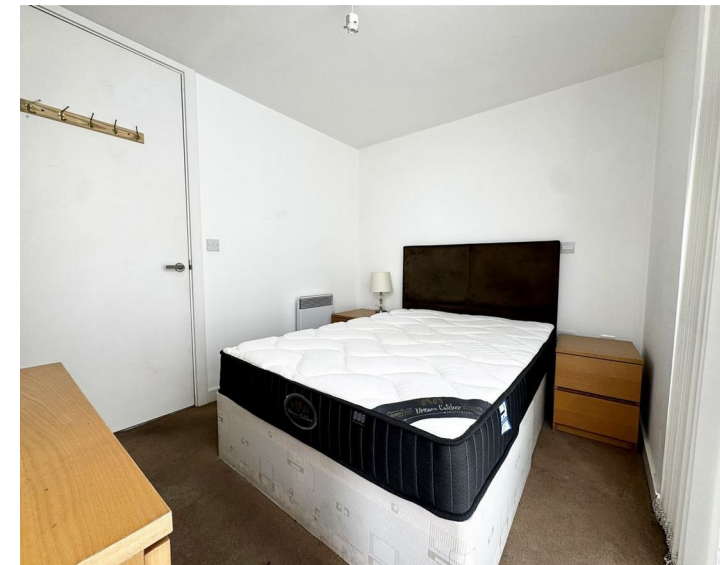
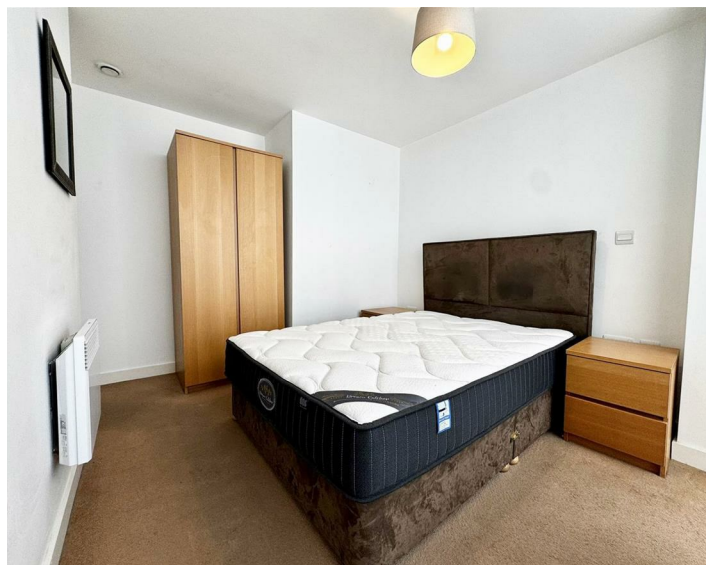




Apt 37 Eden Square, Liverpool, L2 2DQ
£975 PCM

www.cityresidential.co.uk



About the Property

Available to let is this immaculately presented and well maintained two bedroom sixth floor apartment in the sought after and highly regarded Eden Square Development. Finished to a high standard with modern and well appointed bathrooms and kitchen which includes integrated appliances. The apartment is designed with a contemporary open plan living area to maximise space and also benefits from a balcony. Parking is also included in the rental price. Eden Square is serviced by a lift to all floors. The property briefly comprises: Entrance Hall, Open plan Living/Dining and Modern fitted Kitchen, Two Double Bedrooms, Master with en-suite Shower Room and a further main Bathroom.

EPC Rating - C. Council Tax Band - C. A deposit amount of £1125.00 is payable upon moving in. Call us now on 0151 231 6100 to arrange a viewing.

- EPC - C
- Council Tax Band - C
- Deposit Amount - £1125.00
- Immediate Move In



Energy Efficiency Rating

	Current	Potential
Very energy efficient - lower running costs		
(92 plus) A		
(81-91) B		
(69-80) C	76	78
(55-68) D		
(39-54) E		
(21-38) F		
(1-20) G		
Not energy efficient - higher running costs		
England & Wales	EU Directive 2002/91/EC	



City Residential
81/87 Victoria Street, The Old Haymarket, Liverpool L1 6DG
T: 0151 231 6100 F: 0151 231 6105
E: sales@cityresidential.co.uk



WWW. cityresidential .co.uk